



# GTPS

Grupo de Trabalho da  
Pecuária Sustentável

Brazilian Roundtable on Sustainable Livestock

# WHO WE ARE



- set up in late 2007, formally constituted in June 2009;
- made up of representatives from different segments from the value chain;
- debates and formulates principles, standards and common practices to be adopted by the sector which contribute to the development of sustainable beef production in the triple bottom line;
- members of the RT plan to be proactive given these challenges, leading dialogue and creating agreements to work towards sustainable cattle farming, aware of the social and environmental responsibility held by all those involved ;
- **committed to zero deforestation, with the creation of the conditions and forms of compensation to make it viable.**

# MEMBERS



AgroTools



Instituto Internacional para Sustentabilidade



Rabobank



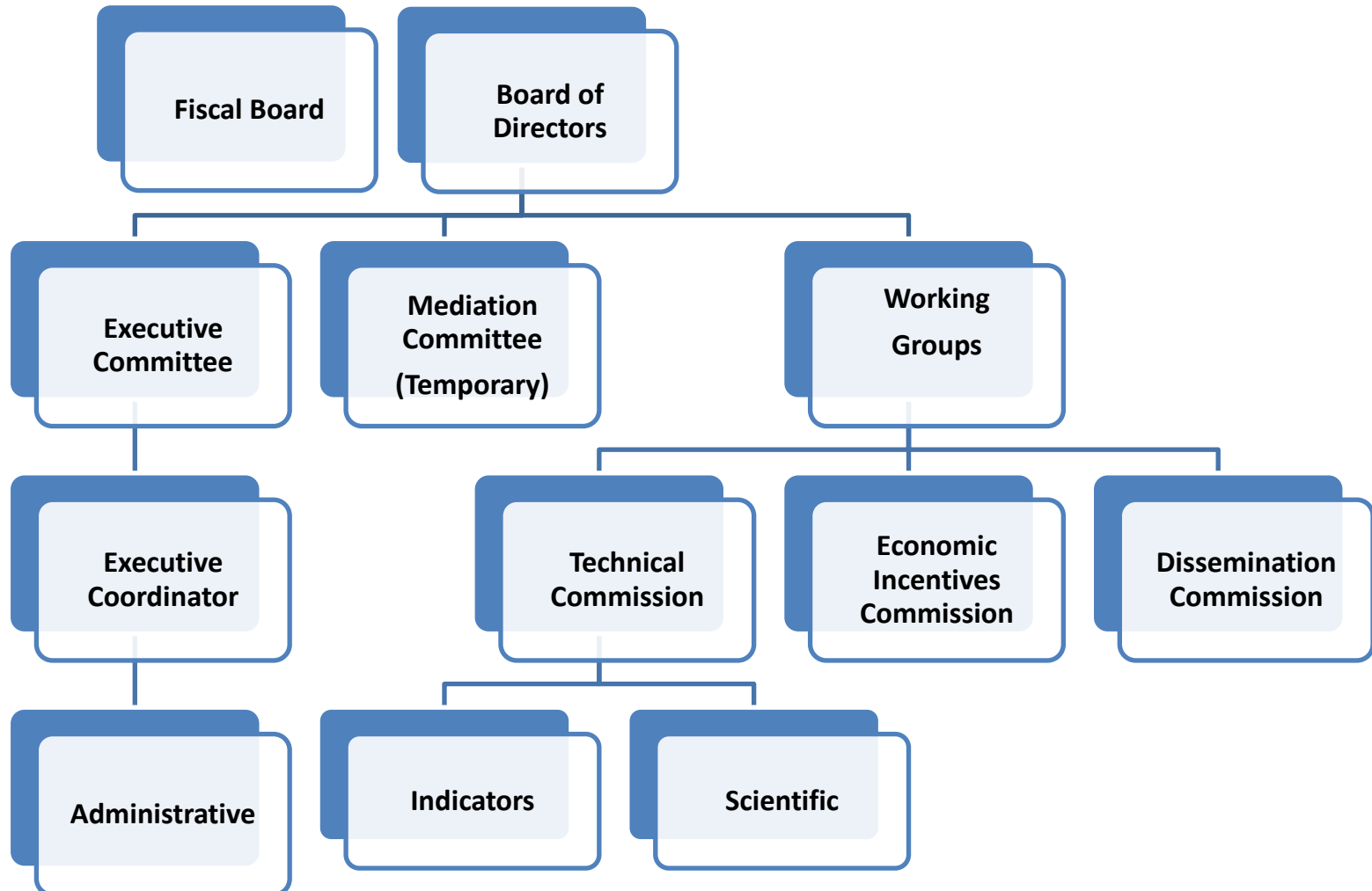
Ministério do Meio Ambiente



# GOVERNANCE



## General Assembly



# Federal Government



## National Climate Change Policy



### ABC Plan

*(alternatives to reduce emissions from agriculture and livestock)*



### ABC Program

*(credit lines to promote low carbon agriculture)*

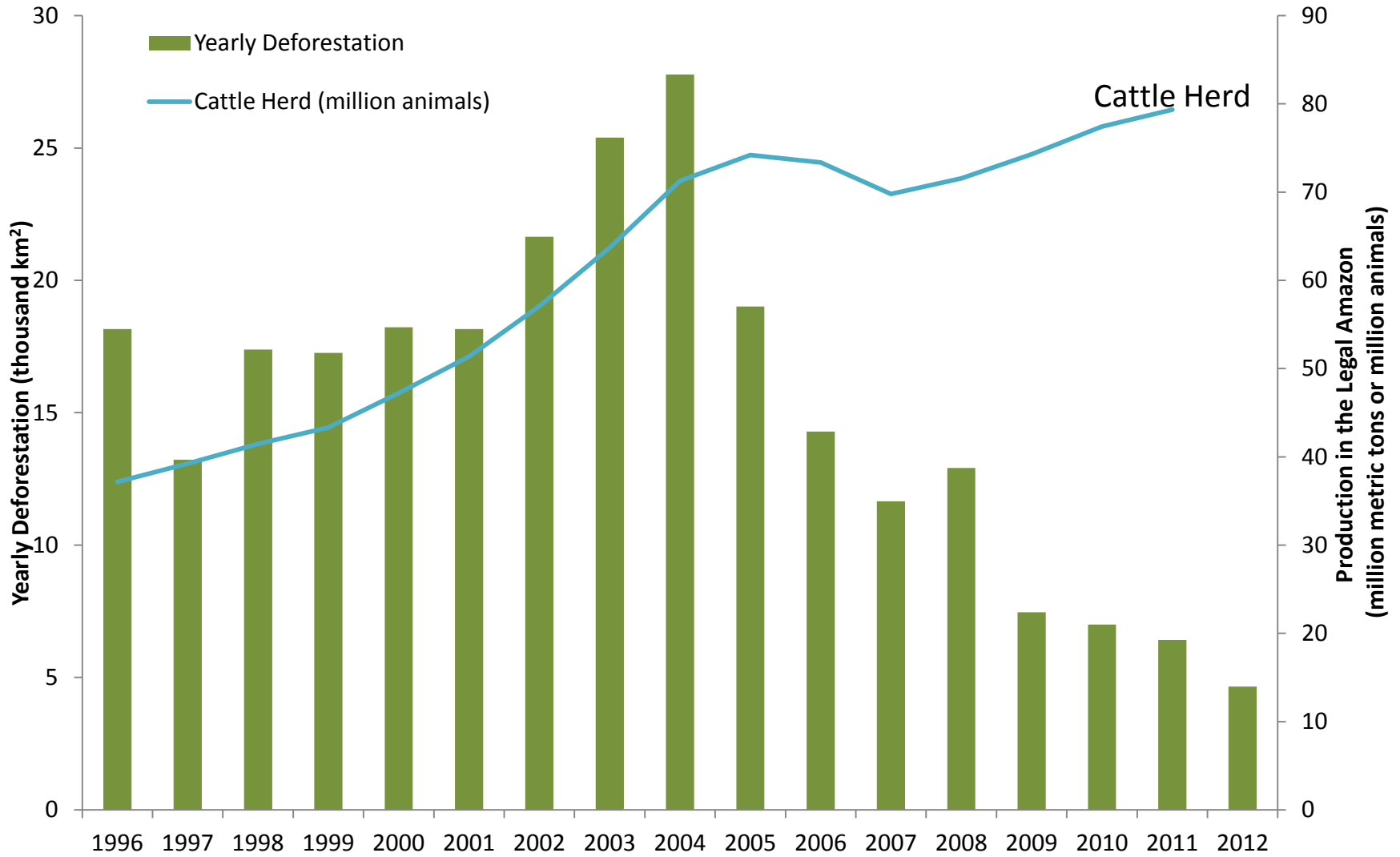
- R\$ 4,5 billion (Jun/13 to Jul/14)
- R\$ 1 million max. credit per producer
- 5 % interest rate

# Protocol of Intentions



On the 4<sup>th</sup> of May 2012, GTPS signed a Protocol of Intentions with the Brazilian Ministry of Agriculture to cooperate with the Federal Government to achieve the goal of restoring 15 million ha of degraded pastures.





Source: IPAM

# The Brazilian Beef Stories

TheBrazilianbeef



Inscrever-se

4 vídeos



who really like and are concerned with what they do.

6:49 / 6:59
Normal

Gostei



+ Adicionar a

Compartilhar



5302



Enviado por [TheBrazilianbeef](#) em 07/10/2011

Learn more at <http://www.brazilianbeef.org.br>

DRAFT

33 pessoa(s) gosta(m), 0  
pessoa(s) não gosta(m)





# GTPS

Grupo de Trabalho da  
Pecuária Sustentável

# THANK YOU

Eduardo Brito Bastos – President

[secretariado@pecuariasustentavel.net](mailto:secretariado@pecuariasustentavel.net)

[www.pecuariasustentavel.org.br](http://www.pecuariasustentavel.org.br)