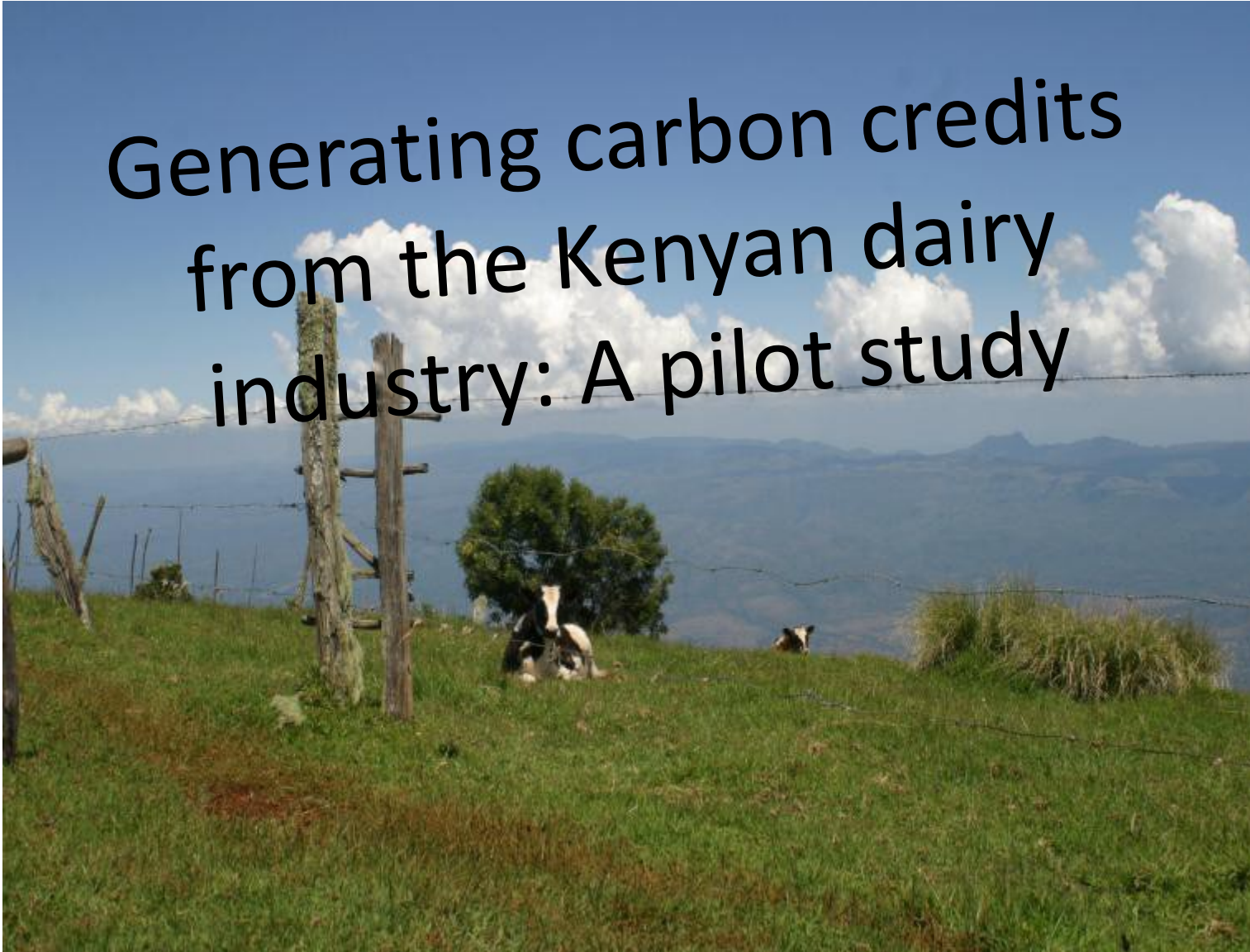


# Generating carbon credits from the Kenyan dairy industry: A pilot study



Simon Fraval,  
ILRI

Global Agenda  
and  
Payment for  
Environmental  
Services

# GAA main objectives and examples?

## Objectives

- Feasibility assessment
- Methodology development
- Funding mechanism

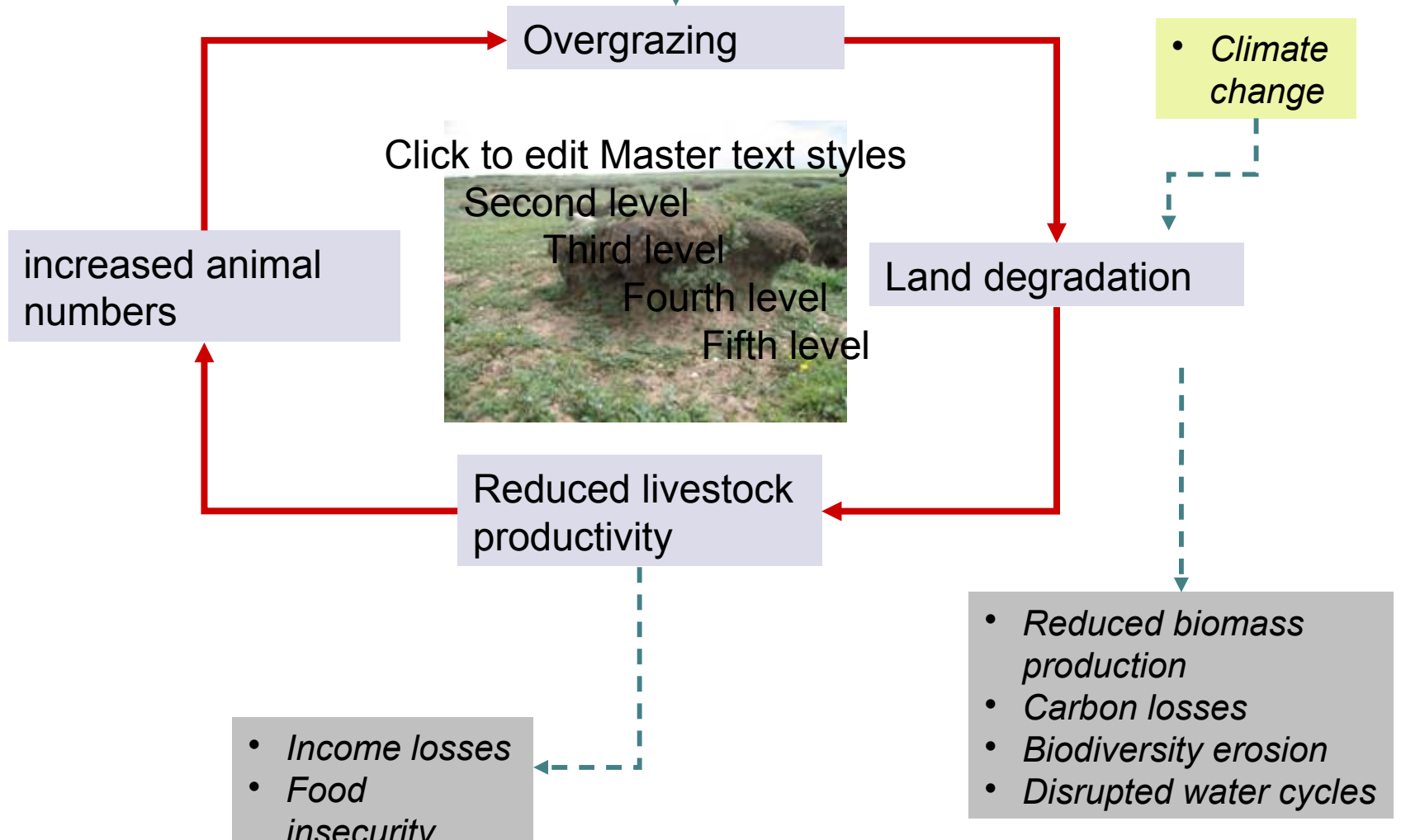
## Examples

- Stocking rates in Mongolia, manure bio-generation, carbon sequestration in China

# C sequestration project in China

- *Population increase*
- *Reduced animal movements*

- *Climate change*

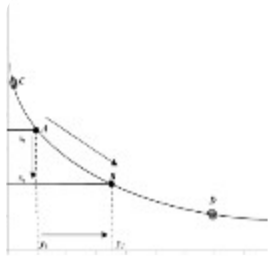


Payment for  
Environmental  
Services  
and  
the efficiency  
gap

# Pilot project objectives

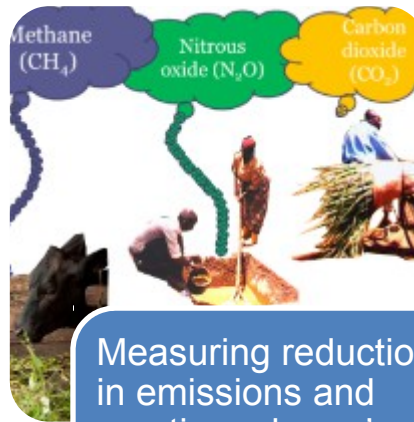
- Feasibility assessment
- Methodology development
  - Link efficiency gains to reductions in GHG emission intensity
- Funding mechanism

# Project concept



Increased productivity generates less emissions per unit of milk

- Feeding for milk yield
- Feed additives for emission reduction
- Waste management
- Herd management. Including: milker replacement and retirement, genetics, and animal health



Measuring reductions in emissions and meeting a buyer's needs

- Site selection
- Developing methodology
- Baseline studies
- Verifying emissions
- Advertising to buyers

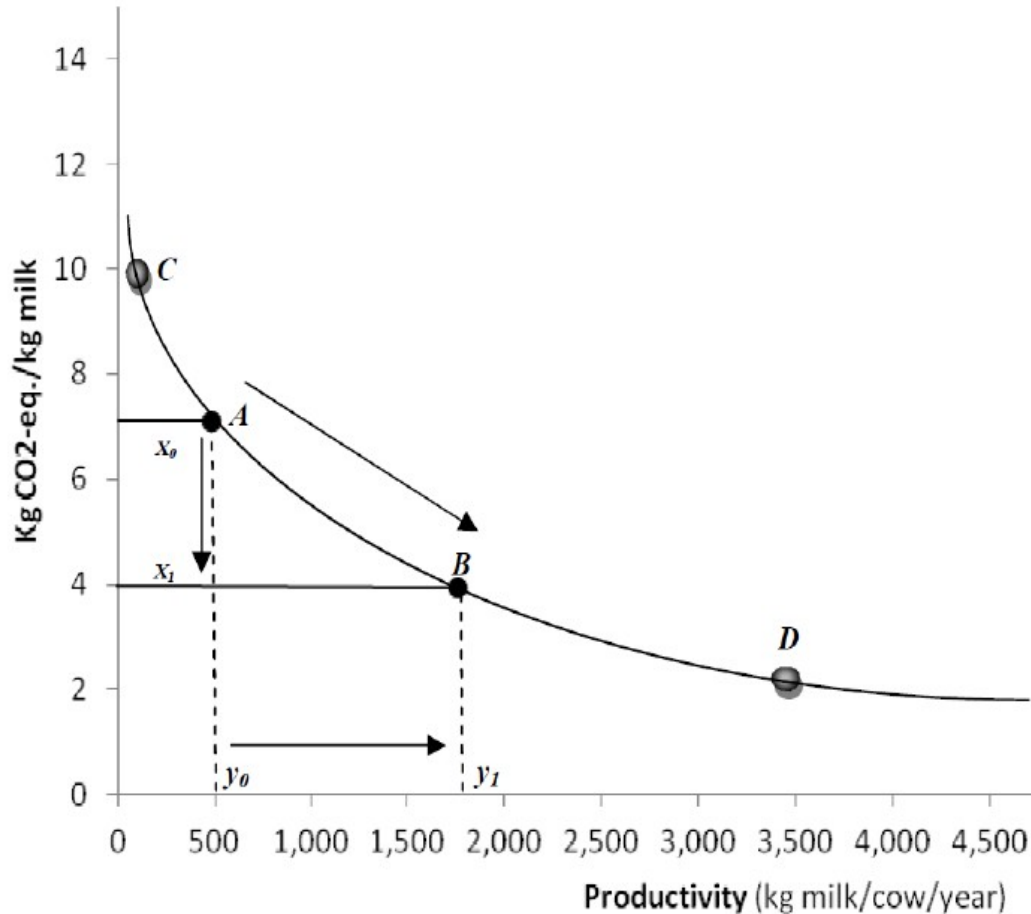


Funds support farmers' efforts to decrease emissions through productivity gains

- Providing credit for input procurement
- Funding for extension officers

After pilot project completion, assess viability for other sites

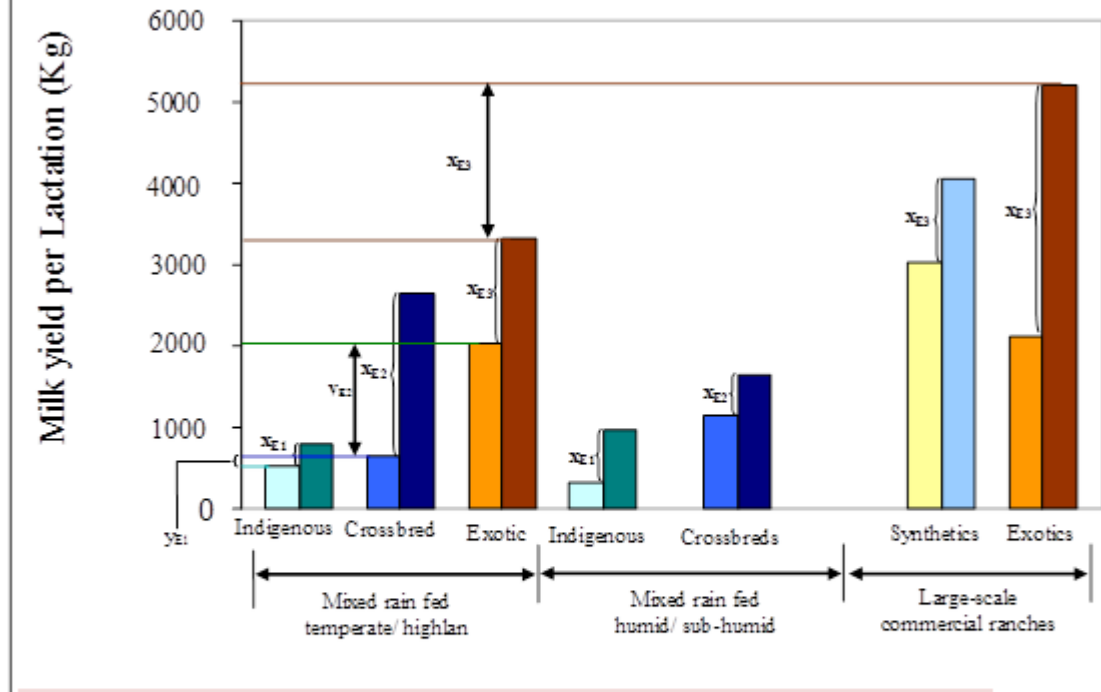
# Efficiency gains as GHG mitigation



Move from A to B:  
improve productivity  
and generate Carbon  
credits



### C. East Africa



- Light coloured bars = Minimum production
- Dark coloured bars = Maximum production

- $x_i$  = Yield gaps due to “animal husbandry practices”
- $y_i$  = Gap in productivity due to “genotype”

# Progress to-date

- Scoping study and country selection
- Forming a partnership between FAO, MLD and ILRI.
- Stakeholder workshop with Kenyan ministries and development partners
- Site selection Shortlisting
- Methodology development

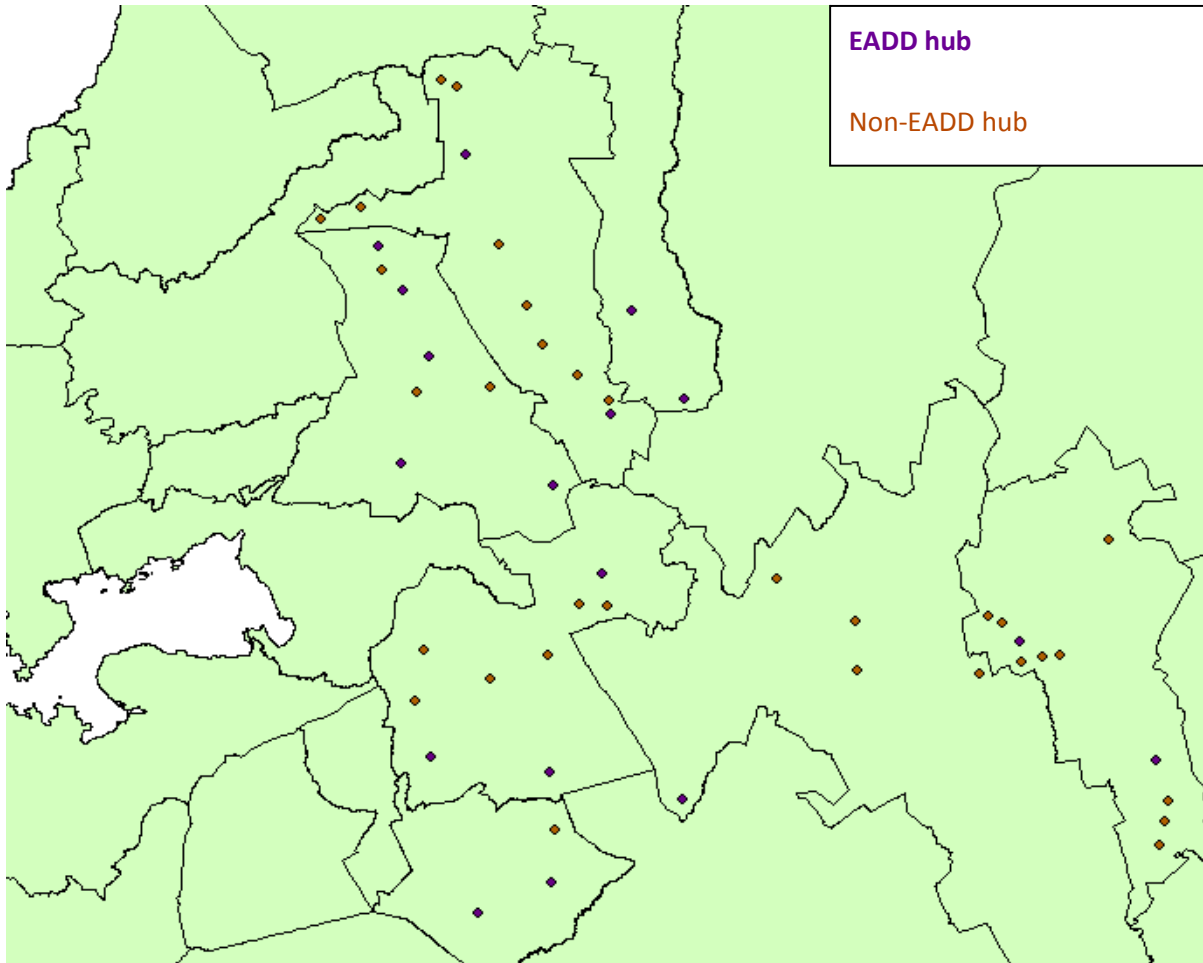
Site selection

# Focus geographical areas



- Bomet, Kericho, western Nakuru, southern Keiyo-marakwet, Uasin-Gishu, Nandi and western Nyandarua.

# Active hubs for assessment



# Hub selection

Resources:

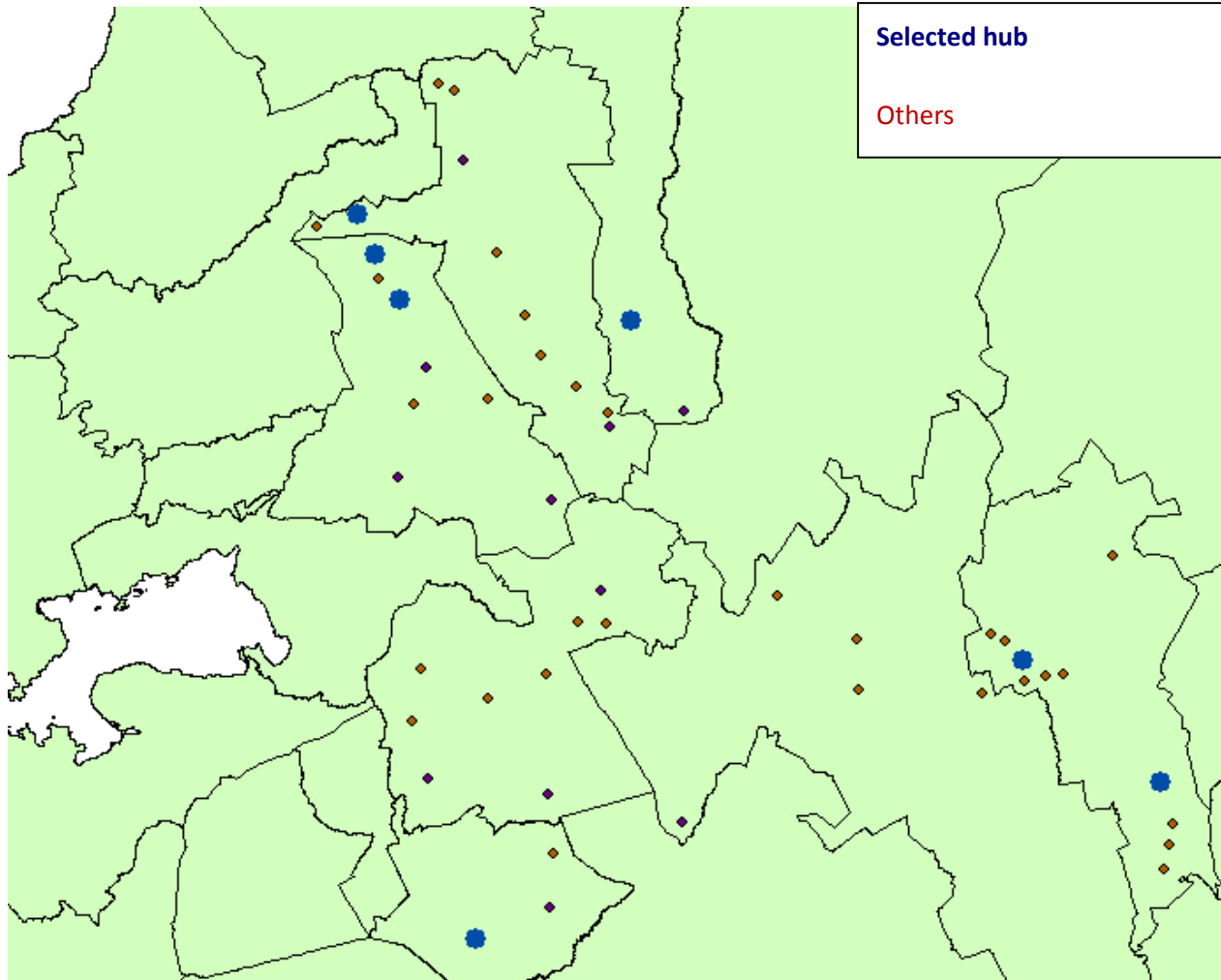
- Existing data on 17 EADD hubs
- Primary data collection from non-EADD hubs

Non-EADD sites: 39

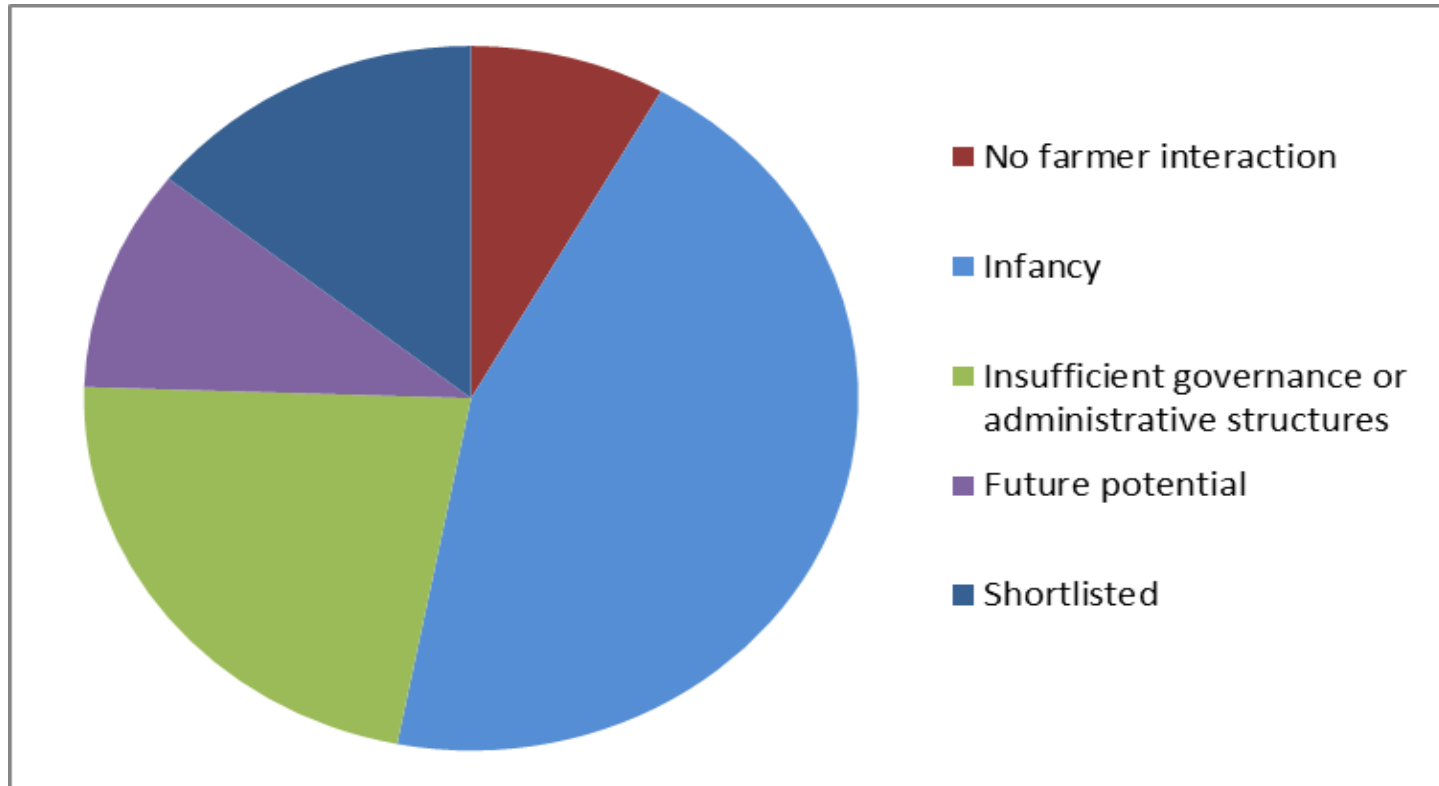
Interviewed: 13



# Hub selection Shortlist



# Hub selection – screening summary



“Management there can be difficult to work with, they have to check everything with their less progressive board.”

“They purchased a cooler prematurely, this hub is financially constrained.”



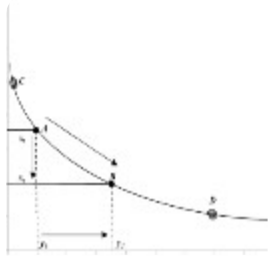
# Hub selection – shortlist

- 1) Kabiyet
- 2) Tanykina
- 3) Onesimus
- 4) Ol Kalou
- 5) Siongiroi
- 6) Chepkorio

The opportunity to host the pilot project will be tendered out by the Ministry of Co-operative Development

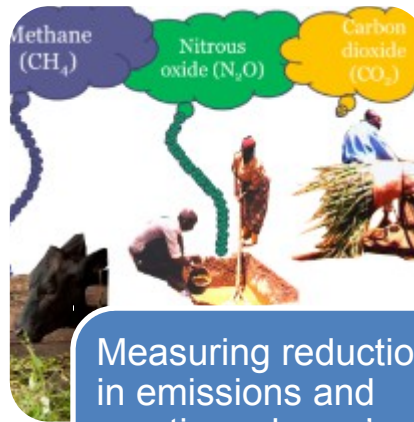
From selection  
to pilot

# Project concept



Increased productivity generates less emissions per unit of milk

- Feeding for milk yield
- Feed additives for emission reduction
- Waste management
- Herd management. Including: milker replacement and retirement, genetics, and animal health



Measuring reductions in emissions and meeting a buyer's needs

- Site selection
- Developing methodology
- Baseline studies
- Verifying emissions
- Advertising to buyers

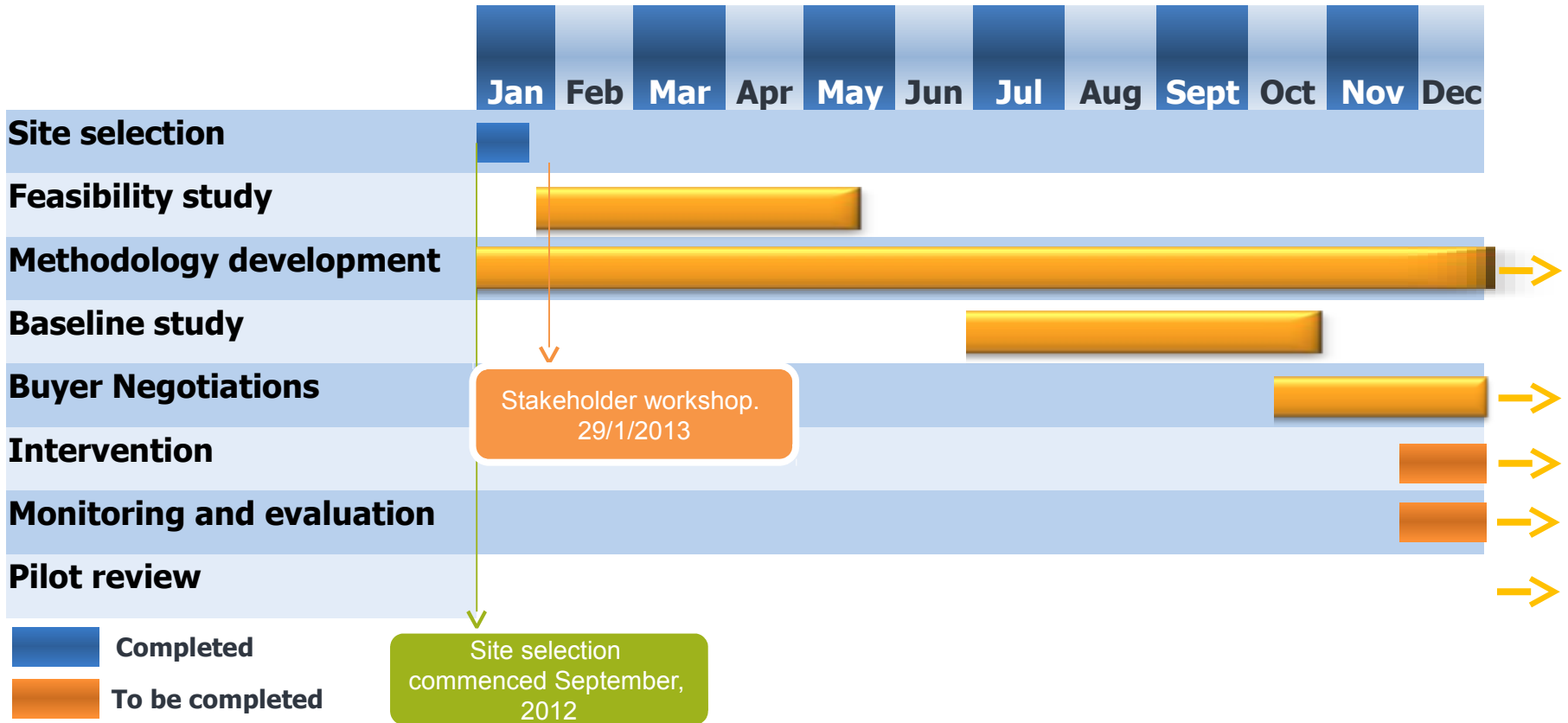


Funds support farmers' efforts to decrease emissions through productivity gains

- Providing credit for input procurement
- Funding for extension officers

After pilot project completion, assess viability for other sites

# Next steps



Goal: Methodology and transfer mechanism available to global stakeholders

# Thank you



S.fraval@cgiar.org