

Water quality as an entry point for valuing grassland practice

FA2 WORKSHOP MONTPELLIER

13-15 MAY 2014

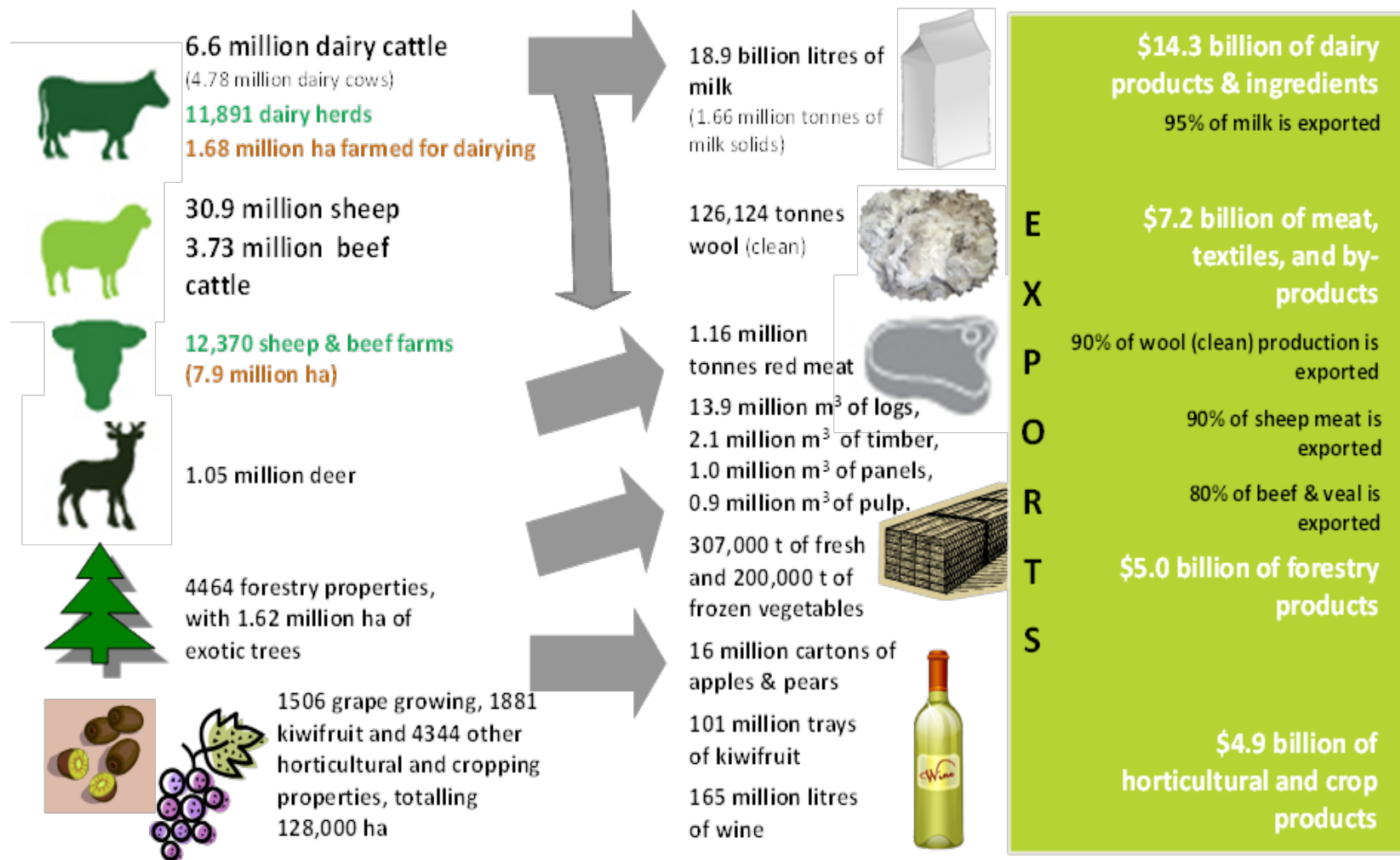
LIZ WEDDERBURN

MELISSA ROBSON

DENISE BEWSELL

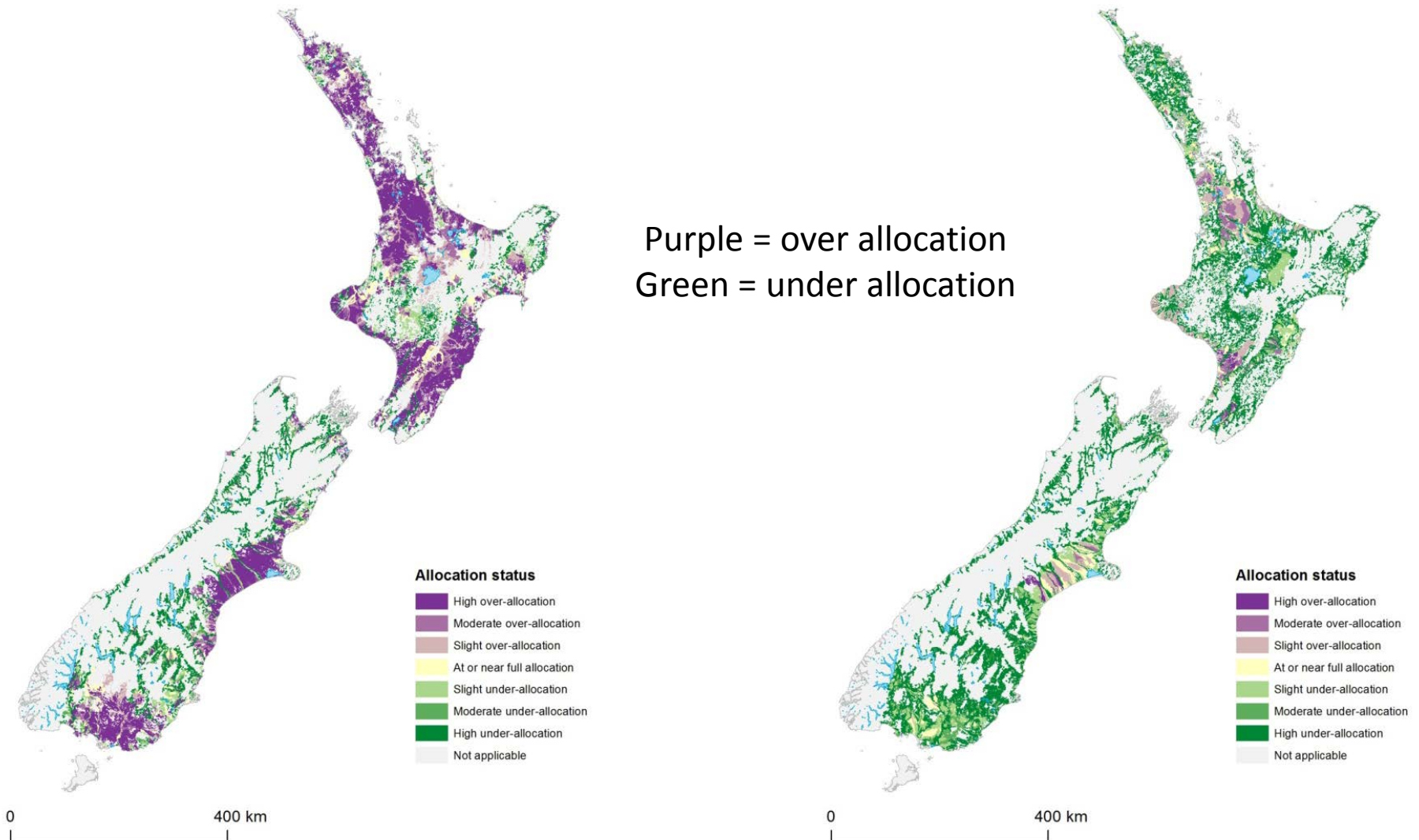


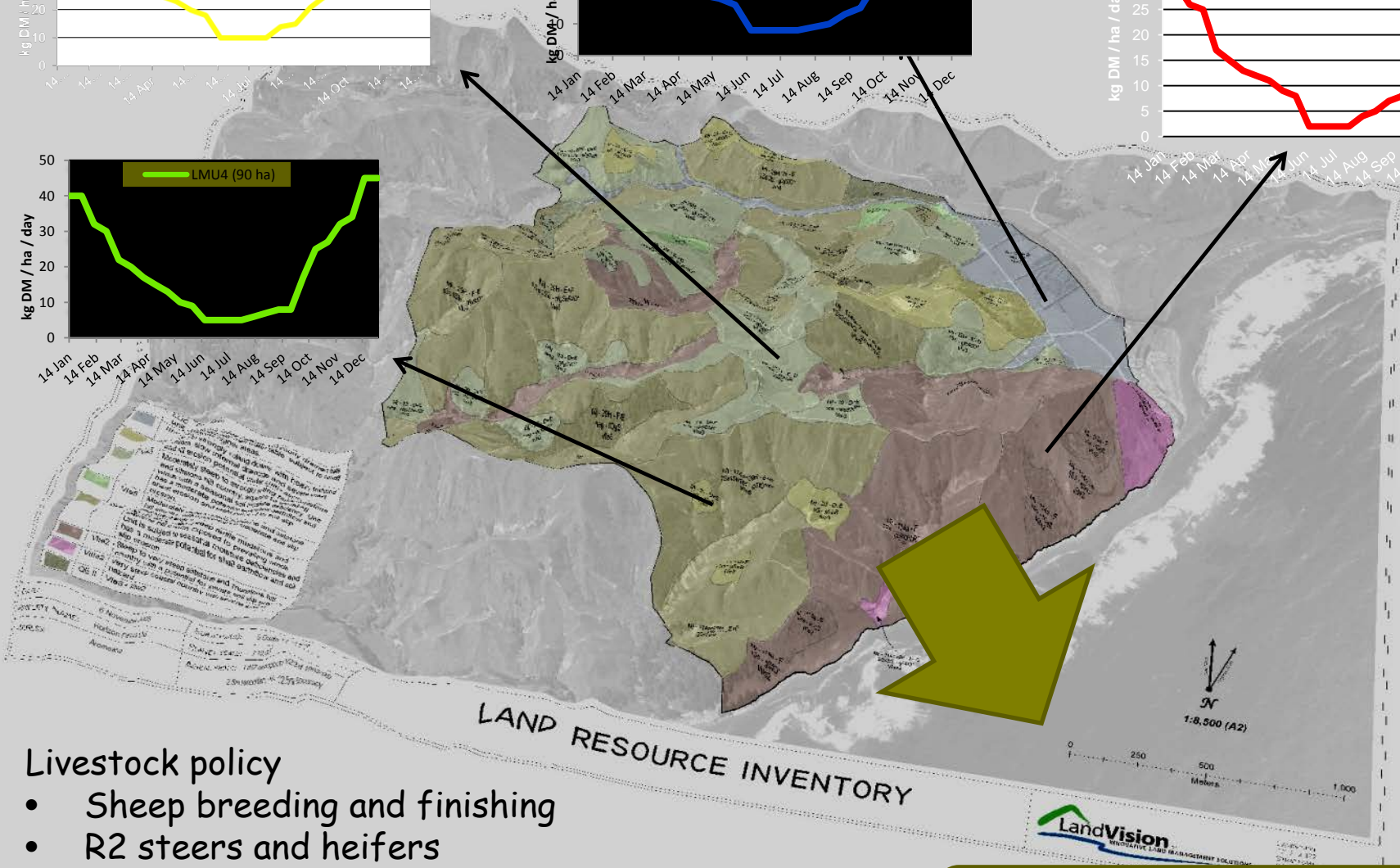
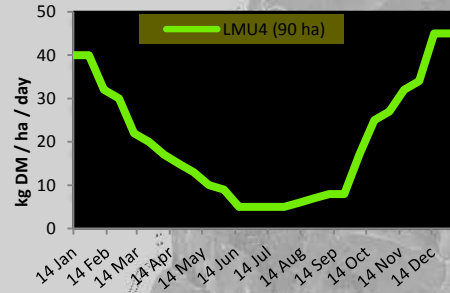
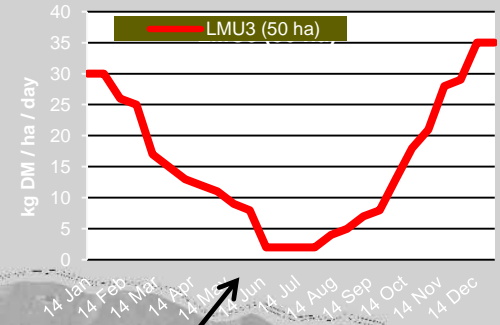
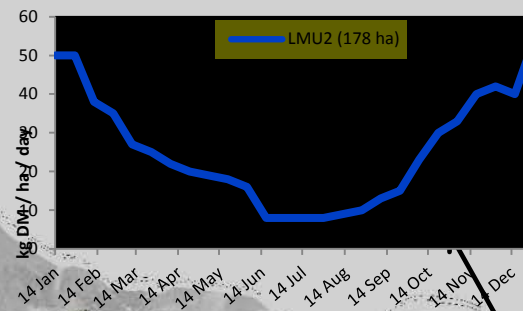
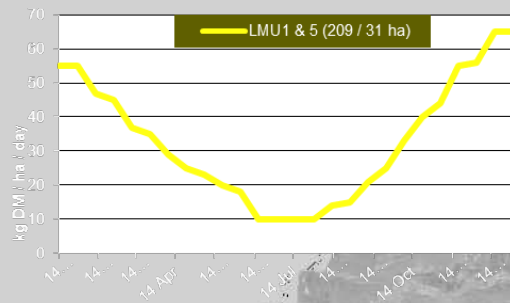
New Zealand's agriculture sector



Catchment allocation dependent on Community established targets

Left-hand map is for N at a 'Good-Fair' (B-C) threshold for river algae growth, right-hand map is for N at a 'Fair-Poor'(C-D) threshold for river algae growth



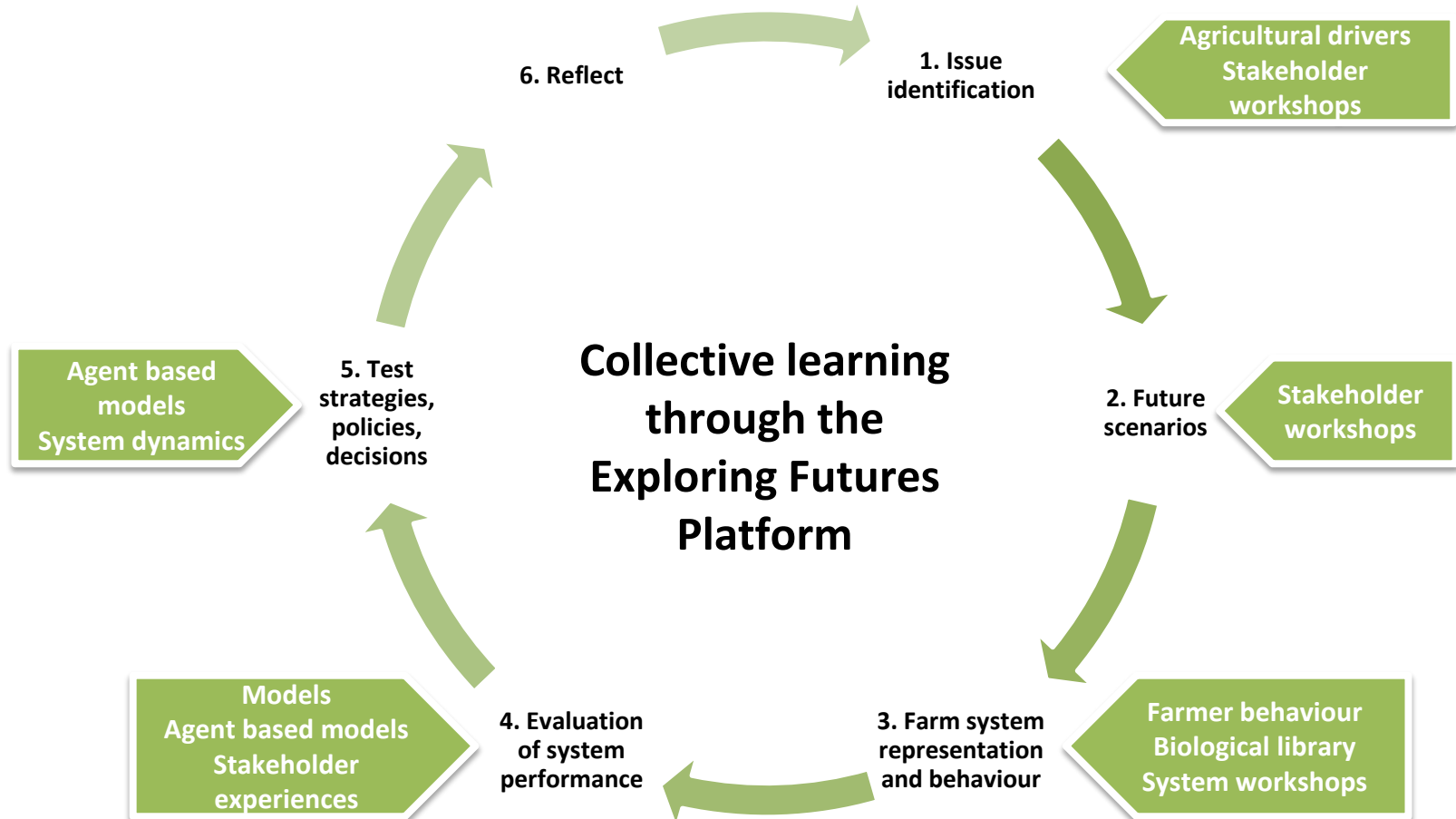


Livestock policy

- Sheep breeding and finishing
- R2 steers and heifers
- Trophy Deer

Integrated whole farm
planning model

COLLABORATION WITH STAKEHOLDERS: EXPLORING FUTURES PLATFORM



SUCCESS AND GAPS

- Acceptance by the community of plan changes
- Industry organisations agreeing and then communicating good practice and building capability in farmers and organisations to implement
- Ability to farm within nutrient limits and remain profitable
- Technologies alone and resource efficiency not sufficient to fill the gap in some catchments

LESSONS

- Systemic approach required; trade offs need negotiating
- Collaborative approach essential
- Science informs but does not decide
- Leadership at the local level required
- Understanding how decisions are made within a farm system
- Regulations act as a catalyst for change
- Sustainable grasslands linked to sustainable water