



The LEAP Partnership - generating knowledge to support the Global Agenda

Hsin Huang, 2016 LEAP Chair

Who we are

The LEAP Partnership is a multi-stakeholder initiative committed to improving the environmental performance of livestock supply chains, while considering both economic and social viability of the sector.



- ✓ Steering Committee: **equal say**
- ✓ Secretariat hosted at FAO
- ✓ Participation is **open and voluntary**: members recognize the objective and principles of LEAP

LEAP Partnership in a nutshell

International, Multi-stakeholder, Partnership on:

- ❖ Livestock supply chains
- ❖ Environmental sustainability, including eco-efficiency
- ❖ Multi-criteria approach
- ❖ Life-cycle thinking and life cycle assessment (LCA)

LEAP “products”:

- ❖ Science-based consensus environmental assessment and reporting guidelines
- ❖ Sound environmental assessment metrics
- ❖ Reference Data



How does the action network can support sustainable development of livestock?

- Proliferation of environmental assessment methods is resulting in misleading claims and, thus, in confusion of decision makers, and in... distraction from focus on real improvement of environmental performance.
- Need for comparative and standardized indicators to move the discussion on environmental performance measures.

LEAP Achievements

- LEAP Partnership work program 2012 - 2015, has been a front runner in developing consensus environmental assessment tools:

- ❖ 6 Technical Advisory Groups (TAGs)
- ❖ 300 experts from all world regions
- ❖ 6 Technical Guidance documents
- ❖ 1 Global database for the 5 main feed crops



Small Ruminants

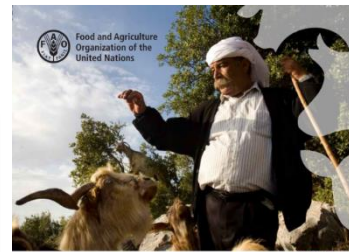
Feed Crops Database

Poultry

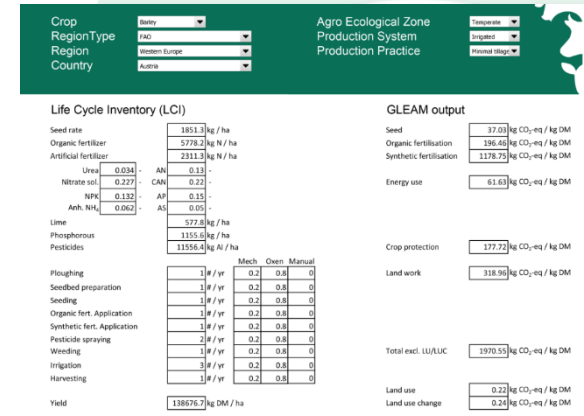
Feed



Greenhouse gas emissions and fossil energy use from poultry supply chains



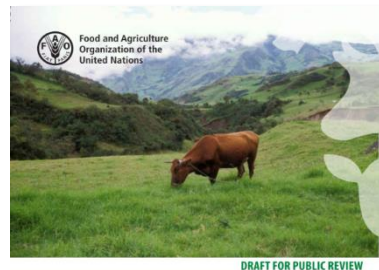
Greenhouse gas emissions and fossil energy use from small ruminant supply chains



Methodological notes

Large ruminants

Biodiversity



Principles for the assessment of livestock impacts on biodiversity



Environmental performance of large ruminant supply chains



Developing sound tools for transition to sustainable food and agriculture

LEAP Partnership Life Cycle Assessment Guidelines on Livestock supply chains:
Methodological notes

2016 Public Review

Pig supply



DRAFT FOR PUBLIC REVIEW
Environmental performance of
pig supply chains
Guidelines for assessment



DRAFT FOR PUBLIC REVIEW
Replies to comments by Cowspiracy

Reply to
comments by
Cowspiracy



Capacity-Building

LEAP promotes capacity building and technology transfer across the livestock production chains by:

- ❖ Developing and sharing knowledge between regional experts;
- ❖ Cooperating with university networks and CSOs;
- ❖ Supporting road testing in various countries and in different application contexts;
- ❖ Disseminating LEAP technical documents for free at FAO website.

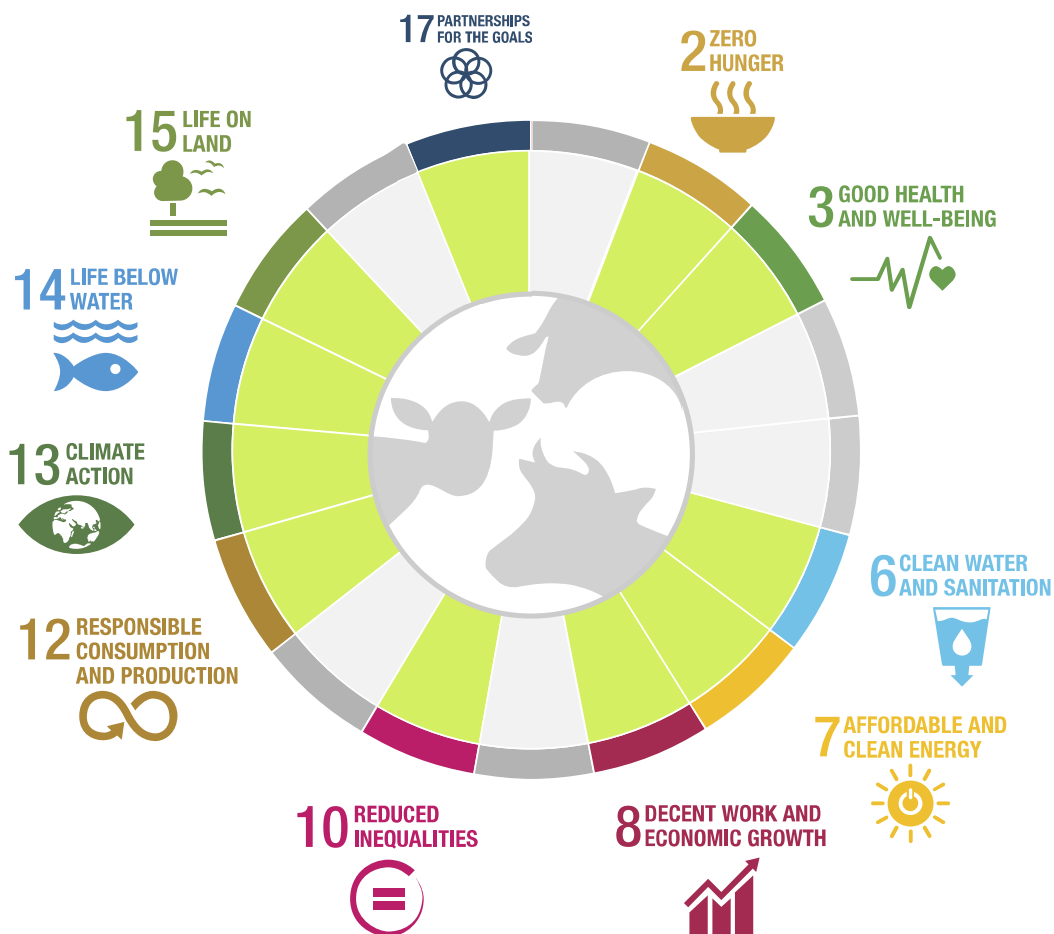


Proposed activities in support of the 2016-2018 action plan of the Global Agenda

- To evaluate the applicability and comprehensiveness of LEAP guidelines through a road testing;
 - ❖ Different policy application contexts, geographical areas, and feed and livestock production systems
- To broaden the scope of LEAP work program 2016 - 2018;
 - ❖ Soil carbon stock changes, Water footprinting, Nutrient cycling, Eco-toxicity, Feed additives, and Biodiversity
- Continuous review process;
 - ❖ Identifying barriers that might prevent **application and endorsement**

LEAP+: From Environmental Assessment to Sustainability Assessment

LEAP Partnership assessment tools & SDG



Road testing, consolidated guidelines and abridged version

2	3	6	7	8
10	12	13	14	15

Biodiversity

2	12	15
---	----	----

Grassland carbon storage

2	12	13
---	----	----

Accounting of nitrogen and phosphorus cycles + assessment methods on eutrophication and acidification

2	12	14
---	----	----

Water footprinting
Eco-toxicity

2	3	6	12
---	---	---	----

From environmental assessment to sustainability assessment

2	12
---	----

LEAP guidance and methodology on feed additives

2	12
---	----

LEAP is a mechanism for achieving the SDG goals

17

Operating the action network:

LEAP+ (2016 - 2018) draft budget size

2016-2018	USD
Budgeted	1,573,900

Missing

2016-2018	USD
Missing	594,400



Join LEAP

The Partnership is open to all organization and governments interested in improving the environmental performance of the livestock sector.

More information on how to engage in this initiative can be obtained at www.fao.org/partnerships/leap/en/